

**MOZA**  
RACING

**RS series steering wheel**

Run all out while keeping the car under control



User manual 使用说明书

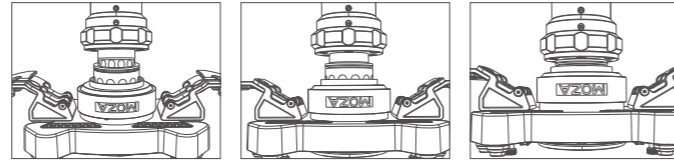
**01 Product Description**

- Dual-Clutch Photoelectric Magnetic Paddles.
- RGB Programmable Flow Shift Light.
- Advanced Programmable Buttons and Knobs.
- D1 Style Quick Release.
- Wireless Technology.



RS-O Racing Wheels R-D Racing Wheels

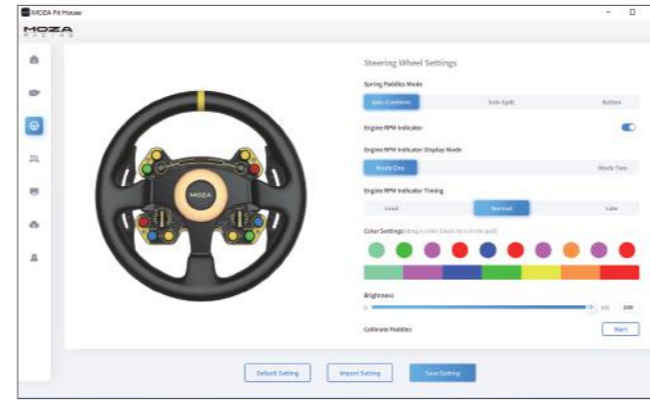
**02 How to Use the Quick Release OR Quick Release Setup**



1. Align the 6 steel balls on the steering wheel quick release female connector to the corresponding 6 grooves on the base quick release male connector.
2. Press the steering wheel down to join the connectors.
3. Once locked check to ensure the steering wheel is connected to base by rotating the wheel.
4. To remove the steering wheel, pull up the golden sleeve with both hands and remove the steering wheel at the same time.

**03 Racing Wheel Configuration**

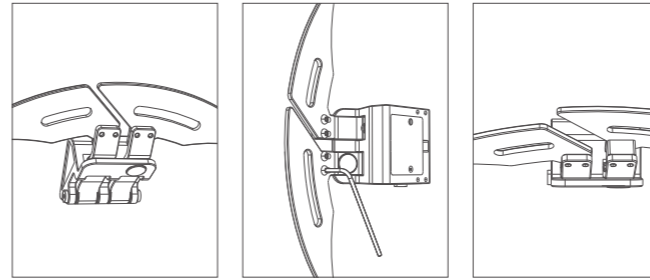
- The steering wheel can be set conveniently and quickly in the MOZA Pit House Software.
- Down paddle mode: Set the mode of double clutch paddles, which can be set as left and right composite axes, left and right independent axes and keys respectively.
  - Speed follow-up: Turn on or off the linkage between LED shift indicator and speed.
  - Indicator display mode: It is divided into mode 1 and mode 2. When the mouse moves over the option, a detailed explanation will pop up.
  - Speed prompt setting: It is divided into advance type, standard type and limit type, according to the relationship between speed and the time when the shift indicator light is on.
  - Color setting: 7 colors can be set separately for each LED.
  - Brightness adjustment: Adjust the brightness of the shift indicator.
  - Dial calibration: click here to calibrate the dial when the dial sensing is abnormal.



(for detailed steering wheel settings and functions, please visit the official website of MOZA Racing)

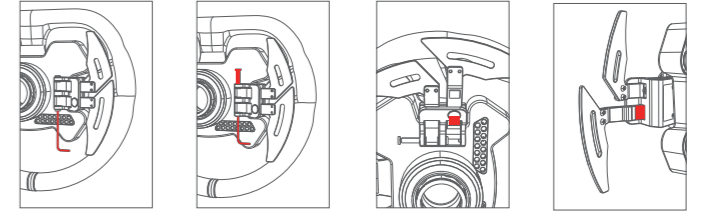
**04 Installation of Paddle Approach Block**

Use the hexagon wrench in the screw kit to remove the two screws on the shift paddle, add the heightening block, and tighten it with the attached long screw. Using this gasket, the distance between the paddle and the hand can be shortened by 8mm.



**05 Installation of Magnetic Suction Paddle Mute Pad**

Place the steering wheel on a flat surface with the surface facing down, use a hexagonal wrench to remove the screw on one side of the shift paddle trigger rod, and then use a wrench to push the pin from the side of the magnetic suction paddle (it is not necessary to push the pin out completely, only to separate the magnetic suction paddle trigger rod and the pin), and then stick the mute pad on the convex position on the back of the paddle trigger rod, as shown in the figure. Finally, return the latch, and replace the screw.



For more information and teaching videos, please log in to the official website.

**06 Packing List**

1. RS steering wheel
2. tool kit:
  - Hexagon screwdriver
  - 8mm aluminum alloy approach block x4
  - M3x14 screw x8
  - Mute pad x4

**07 Product Spec**

- Frame material:** Brushed aluminum alloy.
- Panel material:** Forged Carbon Fiber.
- Rear shell material:** Aluminum alloy.
- Paddle material:** 3mm thick forged carbon fiber
- Size:** 13 inches (325mm).
- Magnetic paddle:** 2.
- Double clutch paddles:** 2.
- Mechanical keyboard texture keys:** 10.
- 20 Section knob (can be pressed):** 2.
- Universal rocker (can be depressed):** 2.
- Racing horn:** 1.
- Highlight led RGB beads:** 10.
- LED color:** 7-color custom.
- Intelligent telemetry:** Supported.
- Lights setting via Moza Pit House:** Supported.
- Steering Wheel Quick Release:** D1 racing quick release.
- Power supply mode:** Wireless.
- Signal transmission mode:** Wireless.
- Induction mode of magnetic paddle:** Photoelectric.
- Magnetic suction paddle mode:** Double Clutch / Single Clutch / Switch.

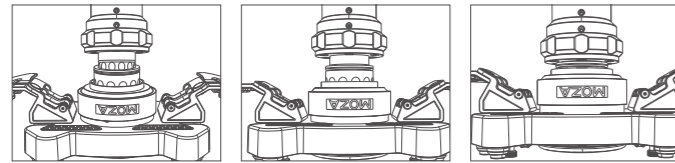
**01 产品介绍**

- 光电磁吸双离合拨片
- RGB流水换挡指示灯
- 24组可编程按键和旋钮
- 进口赛用级快拆
- 无线供电和通讯技术



RS 圆形方向盘 RS D形方向盘

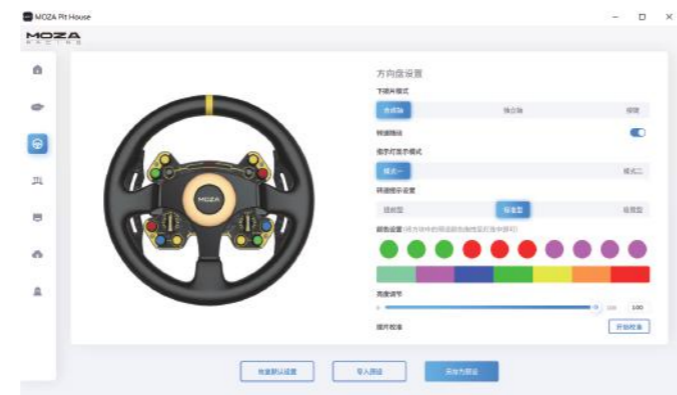
**02 快拆使用方法**



1. 将方向盘快拆母头上6颗钢珠的位置与底座快拆公头的6个凹槽对应
2. 将快拆往盘面方向按压
3. 快拆将自动归位锁紧,若无归位,可尝试轻微转动盘面或取下后再安装
4. 如需拆卸盘面,用双手捏住金色部分,同时拔出盘面

**03 方向盘配置**

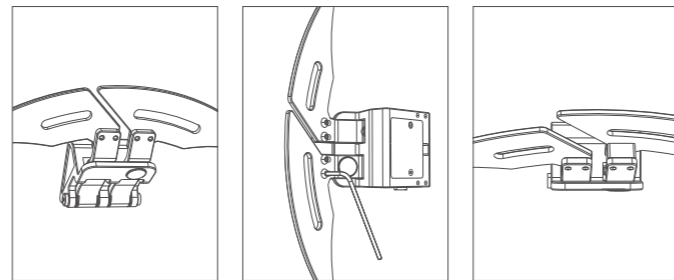
- 在MOZA Pit House软件中可以方便快捷地对方向盘进行设置。
- 下拨片模式:设置双离合拨片的模式,分别可设置为左右合成轴,左右独立轴和按键
  - 转速随动:开启或关闭LED换挡指示灯与转速的联动
  - 指示灯显示模式:共分为模式一和模式二,当鼠标移动到选项上时会弹出详细解释
  - 转速提示设置:根据转速与换挡指示灯亮起的时机关系,分为提前型,标准型和极限型
  - 颜色设置:可对每一颗LED单独进行7种颜色设置
  - 亮度调节:调节换挡指示灯的亮度
  - 拨片校准:当拨片感应异常时,通过点击此处进行拨片校准



(详细方向盘设置与功能,请访问MOZA Racing官网)

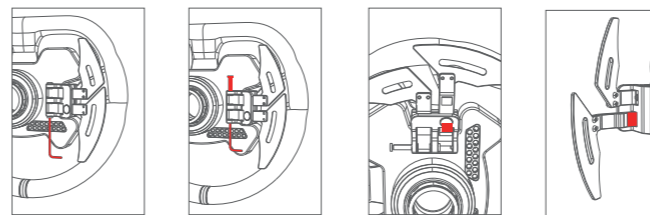
**04 拨片接近块的安装**

使用螺丝工具包内的六角扳手将换挡拨片上的两颗螺丝取下,垫上增高块后用附带的长螺丝拧紧,通过此垫片可将拨片与手的距离拉近8mm



**05 磁吸拨片静音垫的安装**

将方向盘放置于平面上使盘面朝下,使用六角扳手取下换挡拨片触发杆一侧的螺丝,再用扳手从磁吸拨片侧顶开插销(无需完全顶出,仅使磁吸拨片触发杆与插销可以分离即可),然后将静音垫贴在磁铁孔背面和拨片触发杆背面凸起位置,如图示,最后将插销归位并装回螺丝



更多信息和教学视频请登录官网进行查阅

**06 包装清单**

1. RS方向盘
2. 工具包:
  - 六角螺丝刀
  - 8mm铝合金接近块x4
  - M3x14螺丝x8
  - 静音垫x4

**07 产品参数**

- 骨架材质:拉丝铝合金
- 面板材质:锻造碳纤维
- 后壳材质:航空级铝合金
- 拨片材质:3mm厚锻造碳纤维
- 尺寸:13英寸(325mm)
- 磁吸拨片:2个
- 双离合拨片:2个
- 机械键盘质感按键:10个
- 20段旋钮(可按压):2个
- 方向摇杆(可按压):2个
- 赛车喇叭:1个
- 高亮LED RGB灯珠:10颗
- LED色彩:7色自定义
- 智能遥测:支持
- 通过MOZA Pit House设置灯光:支持
- 拆装方式:D1赛车快拆
- 供电方式:无线
- 信号传输方式:无线
- 磁吸拨片感应方式:光电无接触式
- 磁吸拨片模式:双离合式/双离合式/开关式

**产品保修卡**

产品型号	购买日期
用户姓名	用户电话
产品条码	通讯地址

经销商信息(签章)

**产品保修条例**

**保修期**

自购机日起,底座主体,方向盘,踏板和仪表显示屏保修12个月。设备外壳、说明书、线材、螺丝、扳手、包装等不在“一年免费保修服务”范围内,但您可以选择有偿服务。

购买者在以下条件下不享受免费保修服务,但您可以选择有偿服务。

1. 超过三包有效期的;
2. 无三包凭证及有效发票的,但能够证明该产品在三包有效期内的除外;
3. 包修凭证上的型号与修理产品型号不符或者涂改的;
4. 非本公司特约维修人员拆卸造成损坏的;
5. 因不可抗力造成损坏的;
6. 未按产品使用说明书要求使用、维护、保养而造成损坏的。

保修期限于产品部位、不同国家法律法规等差异,将有所不同。相关国家与区域的保修期限,请咨询MOZA官方或购买时联系的MOZA授权经销商。

