

HD-TX
2.4G Wireless Recorder

Product Manual

English

Foreword

Thank you for purchasing the HD-TX.

Instructions

- Please read this product manual carefully.
- Keep this product manual. Always include this product manual when passing the products on to third parties.
- Heed all warnings and follow all instructions in this product manual.

- ⚠ WARNING:** Do not place the product near any corrosive chemicals. Corrosion may cause the product to malfunction.
- Only use a microfiber or dry cloth to clean the product.
 - Operate carefully to not cause any damage by dropping or physical shocking it.
 - Keep all liquids away from the product. Liquids entering the product can short-circuit the electronics or damage the mechanics.
 - Keep storing the product in a dry, clean, dust-free environment.
 - Please have the product checked by the authorized service or agent if your product has some problems. Please note that this warranty does not apply to repair arising out of the malfunction of unauthorized disassembly, although you may request such repairs on a chargeable basis.
 - The product is certificated by RoHS, CE, FCC, KCC and Japan MIC. Please operate the product in compliance with the operation standards. Please note that this warranty does not apply to repair arising out of the misuse, although you may request such repairs on a chargeable basis.
 - The instructions and information in this manual are based on thorough, controlled company testing procedures. Further notice will not be given if the design and specifications change.

FCC Compliance Statement

This device complies with Part 15 of the FCC Rules. Operation is subject to the following two conditions:

(1) This device may not cause harmful interference, and(2) This device must accept any interference received, including interference that may cause undesired operation.

Warning: Changes or modifications not expressly approved by the party responsible for compliance could void the user's authority to operate the equipment.

NOTE: This equipment has been tested and found to comply with the limits for a Class B digital device, pursuant to Part 15 of the FCC Rules. These limits are designed to provide reasonable protection against harmful interference in a residential installation. This equipment generates uses and can radiate radio frequency energy and, if not installed and used in accordance with the instructions, may cause harmful interference to radio communications. However, there is no guarantee that interference will not occur in a particular installation. If this equipment does cause harmful interference to radio or television reception, which can be determined by turning the equipment off and on, the user is encouraged to try to correct the interference by one or more of the following measures:

Reorient or relocate the receiving antenna.
Increase the separation between the equipment and receiver.
Connect the equipment into an outlet on a circuit different from that to which the receiver is connected.
Consult the dealer or an experienced radio/TV technician for help.

RF warning statement:

The device has been evaluated to meet general RF exposure requirement. The device can be used in portable exposure condition without restriction.

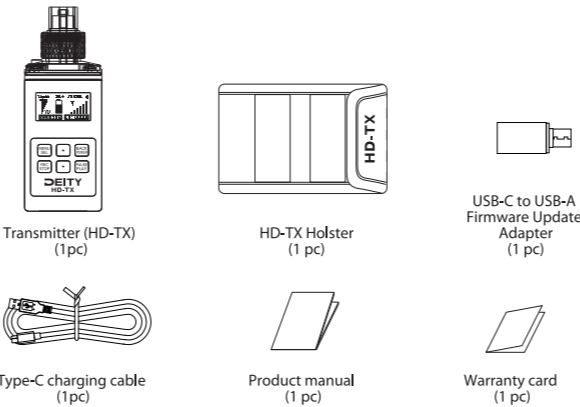
Intended Use

Intended use of the HD-TX includes:

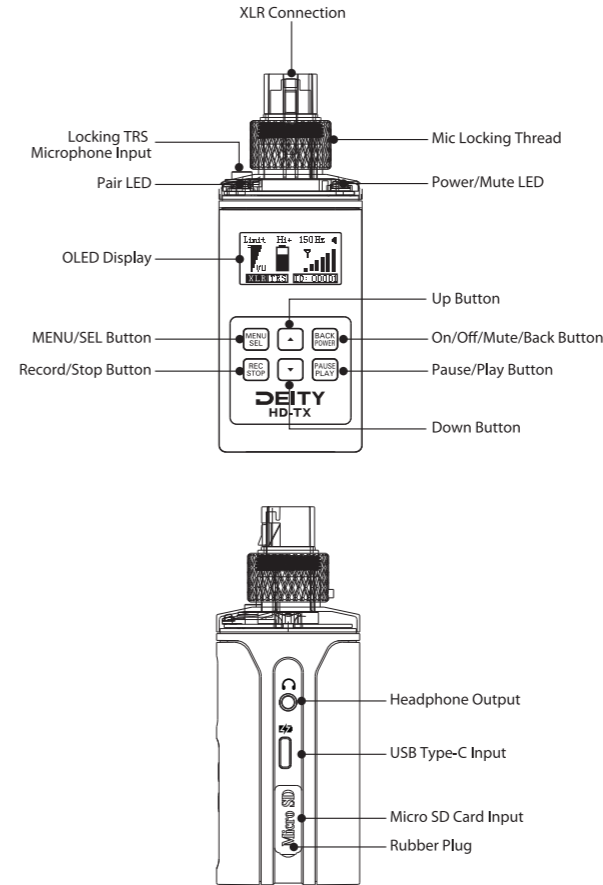
- The user has read the instructions of this manual.
- The user is using the products within the operating conditions and limitations described in this product manual.
- "Improper use" means using the products other than as described in these instructions or under operating conditions which differ from those described herein.

Item check list

Package includes the following items:



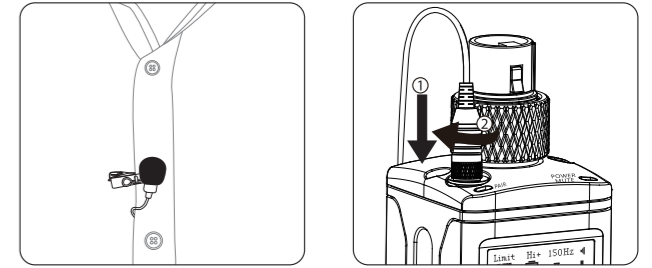
Nomenclature



Installations and Use

1. Lavalier Microphone Installation

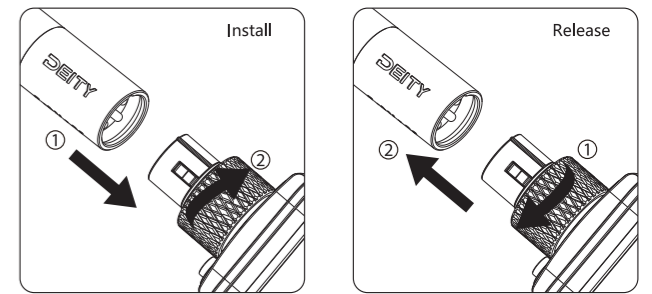
The HD-TX accepts lock-nut 3.5mm TRS microphone connection, simply clip an Lavalier Microphone onto your clothes and screw it into the HD-TX TRS microphone input.



2. 3-pin XLR Microphone Installation

The HD-TX also accepts 3-pin XLR mic connection, and 48V Phantom Power is supplied.

* When connecting a mic via XLR always lock the mic to the HD-TX using the mic locking thread.



Functions and Operations

1. On/Off /Back Button

Long press **BACK/POWER** to turn the HD-TX on and off. It also functions as a "back" button while navigating the various menus and setup screens to return to the previous screen or menu item.

2. MENU/SEL Button

This button is used to enter the menu and select highlighted items.

3. Up/Down Button

The Up and Down buttons are used to select various options and adjust values in the setup screens.

* When the screen is locked, press the Up and Down buttons (3 seconds) simultaneously to unlock the screen.

4. Language Setting

Enter the "LANGUAGE" option in the menu to select the language (system default English).

5. User ID Setting

Enter the "USER ID" option in the menu to set the HD-TX'S User ID to identify different Transmitters.

6. Pair Setting

HD-TX can be wireless connected with the Receiver of deity connect series. Enter the "PAIR" option in the HD-TX and Receiver menu respectively, select "YES" to pair, the HD-TX and Receiver will automatically finish the pairing within 15 seconds, and the Pair LEDs flash green to indicate pairing, the green LEDs are always on to indicate that the pair is successful, and the green LEDs flash slowly to indicate that the pair is unsuccessful.

7. Auto-lock Setting

Enter the "AUTO-LOCK" option in the menu, you can set the lock screen time (system default 15s), there are nine options: never, 5s, 10s, 15s, 20s, 1min, 2min, 5min, 10min.

* When the screen is locked, the buttons do not function. This helps to prevent settings from changing during operation. To unlock the screen, press the Up and Down buttons simultaneously for 3 seconds.

8. Mute Setting

Enter the "MUTE" option in the HD-TX menu to turn on or off the mute function as needed. When "MUTE-ON" is set in the "HOTKEY" menu, you can also quickly turn on or off the mute function by short pressing **BACK/POWER**.

* When mute, the mute LED will flash red slowly.

9. Input Type Setting

Enter the "INPUT TYPE" option in the Transmitter(HD-TX) menu, users should select 3.5mm TRS, XLR 48V-ON or XLR 48V-OFF according to the microphone type.

10. Mic Level Setting

Enter the "MIC LEVEL" option in the HD-TX menu to increase or decrease the microphone gain as needed (matches the Transmitter gain with the microphone's output level, the user's voice level and the position of the microphone). The adjustment range is from -12dB to +36dB in 3dB steps.

11. Limiter Setting

Enter the "LIMITER" option in the HD-TX menu to turn the limiter on or off as needed.

12. Low Cut Setting

Enter the "LOW CUT" option in the HD-TX menu, and select the low-cut option as needed (The choice range is from 20Hz to 200 Hz in 10Hz steps, or turn off the low-cut).
Reminder: please use Low Cut function when it is necessary, otherwise it might affect your recording. Low Cut is meant to reduce light wind noise.

13. Freq Boost Setting

Enter the "FREQ BOOST" option in the HD-TX menu, users can make the high frequency boost (boost audio frequencies 7kHz-20kHz) as needed, the boost range is from 1dB to 10dB in 1dB steps.

14. RF Power Setting

Enter the "RF POWER" option in the HD-TX menu, users can select the RF power (5 RF outputs:10mw, 25mw, 50mw, 100mw, AUTO) according to the actual recording conditions. Users can optimize the HD-TX for maximum battery life or maximum operating range.

15. Firmware Update

Users can update firmware via U disk(exFat/FAT32 USB flash drive). When updating the firmware, please download the latest firmware to the root directory of U disk on the official website, then use the "USB-C to USB-A Firmware Update Adapter" to connect the U disk to the USB Type-C input port, select "UPDATE" option from the menu, and update the firmware following the on-screen instructions. After the firmware update is completed, the firmware version shows the latest version. Official website: <https://www.deitymic.com>

* Transmitter (HD-TX) also supports firmware update via built-in MicroSD card.

16. System Reset

Enter the "SYS RESET" option in the menu to reset the system and restore the default settings.

17. Volume Adjustment Setting

Enter the "VOLUME" option in the HD-TX menu to adjust the monitor volume as needed. The adjustment range is from -24dB to +24dB in 1dB steps.

18. Record/Stop Button

After inserting the Micro SD card into the HD-TX, short press the "REC/ STOP" button to start or stop recording audio files.

* Deity HD-TX units sold inside the USA will disable audio transmission when you hit record. Only internationally sold units will feature the ability to transmit and record simultaneously.

* Max Card Size – 128Gb
Card Type – microSD
Card Format – FAT32, exFAT
Max File Size – 2Gb automatically keeps recording and creates new file
File Type – 24bit/48kHz Uncompressed PCM WAV File

19. Pause/Play Button

Short press the "PAUSE/PLAY" button to play or pause the audio file recorded in the microSD card.

20. File Management

Enter the "FILE" option in the HD-TX menu, the HD-TX allows you to playback files, rename them, and delete takes.

21. Date/Time Setting

Enter the "DATE/TIME" option in the HD-TX menu to set the specific date and time of recording.

22. Charging

The power LED glows green when the battery is good. The color changes to red when there is about 30 minutes of operation left. The HD-TX supports Qualcomm QC 2.0/3.0 and MTK PE quick charge. The battery is charged using the included Type-C charging cable connected to a DC adapter (Not included).

* When charging, the power LED will flash between red and green.
* When full charged, the power LED stays green.

Specifications

Transmission Type	2.4GHz
Antenna Input	Internal
Mute Switch	Yes
Range (distance)	Up To 100m
Transmitting Bitrate/Sampling	24bit/48kHz
Recording Bitrate/Sampling	24bit/48kHz
Limiter	Analog
Low Cut	20Hz to 200 Hz in 10Hz steps
High Frequency Boost	7Khz-20Khz Boost @ +1dB Steps
Display Type	1.3" OLED Display
Battery Type	Lithium-Ion Rechargeable Battery
Battery Capacity	2700mAh
Battery Working Time	~10 Hrs @100mw RF Output
Battery Recharge Time	<90 minutes via USB QuickCharge 2.0/3.0
Battery Charger	USB Type-C Charging Cable
Audio Input Connector	3-Pin XLR, Female Locking 3.5mm TRS
Audio Retransmission Modes	Low 19ms/ Medium 30ms/ High 40ms
Transmitting Power	10mW/25mW/50mW/100mW/AUTO
Input Gain Range	-12dB to +36dB in 3dB Steps
Input Frequency Response	20Hz~20KHz
Audio Output Connectors	Stereo TRS
Output Power	48V via XLR, +3V Plugin Power via TRS
File Sizes	1Hr = ~1Gb
Dimensions	42.5mm*42.5mm*112.3mm
Net Weight	220g
Temperature Range	-10 °C to +45 °C

* Run times vary based on RF Output, if Phantom Power turned on, and if the unit is recording to the micro SD card. Your battery life may vary. Reducing the RF Output will increase the battery life.

Icon Description

	Mute-off
	Mute-on
	RF Level The icon changes in size horizontally to indicate the strength of the incoming RF signal.
	VU Meter The icon changes in size vertically to indicate the audio level.
	Battery Level The icon changes in size vertically to indicate the battery level.
	The Limiter is On
	High Frequency Boost is On

Trademarks

Qualcomm is trademark or registered trademark of Qualcomm in China or other countries. All other corporate and product names and trademarks mentioned in this manual are the property of their respective owners.

